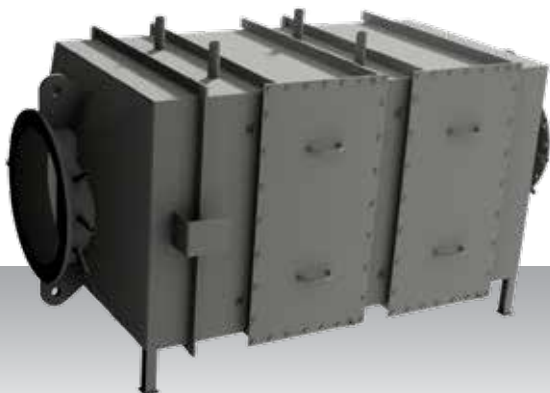


## SCR49



## SCR Reactor

Design	Vertical / horizontal
Emission	IMO Tier III
Size W x D x H (mm) (excl. insulation)	1195 x 1190 x 2658
Weight (kg) (incl. catalyst elements)	1392
Fuel type	MGO/MDO (<0.1% Sulphur)

## System specific information

Engine model*	Mixing pipe diameter (DN)	Mixing pipe length (mm)
S16R	600	2800
S16R2	600	2600

\*For specific engine models and engine data, please see engine chapter or visit our website [engine-genset.mhi.com](http://engine-genset.mhi.com)