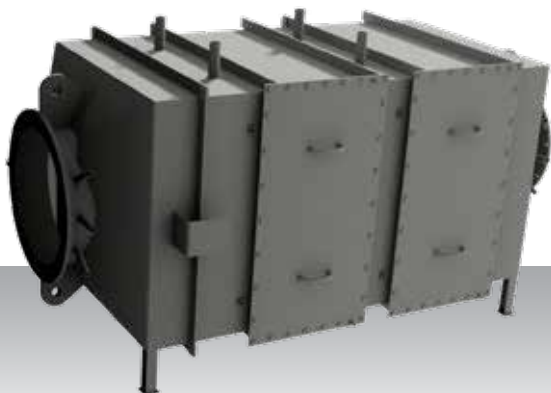


SCR25



SCR Reactor

Design	Vertical / horizontal
Emission	IMO Tier III
Size W x D x H (mm) (excl. insulation)	893 x 882 x 2349
Weight (kg) (incl. catalyst elements)	884
Fuel type	MGO/MDO (<0.1% Sulphur)

System specific information

Engine model*	Mixing pipe diameter (DN)	Mixing pipe length (mm)
S6R	400	2200
S6R2	400	2100
S12A2	400	2500
S12R	400	2700
S16R	400	2700

*For specific engine models and engine data, please see engine chapter or visit our website engine-genset.mhi.com