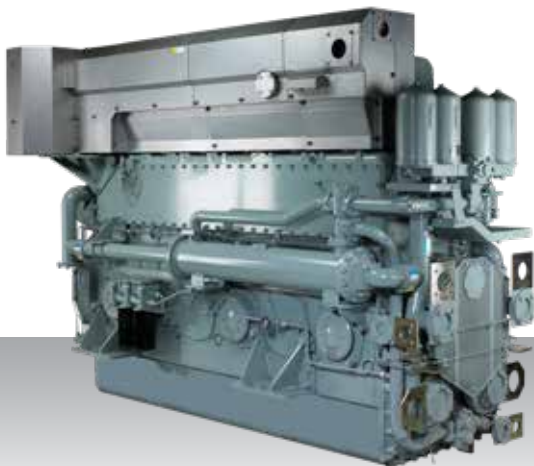


Propulsion - IMO Tier II
Medium speed

S6U2-MPTK



6-cylinder, 4-stroke, water-cooled diesel engine,
with direct-injection, turbocharger and air-cooler.

Bore x stroke (mm) : 240 × 300

Displacement (l) : 81.43

Rating

kW	bhp	rpm	Rating	Emission
1040	1395	930	HD	IMO Tier II
1156	1550	960	MD	IMO Tier II

Engine dimensions & dry weight

L (mm) : 3226

W (mm) : 1429

H (mm) : 2177

Dry weight (kg) : 8650

Dimensions and weight are based on standard configuration.