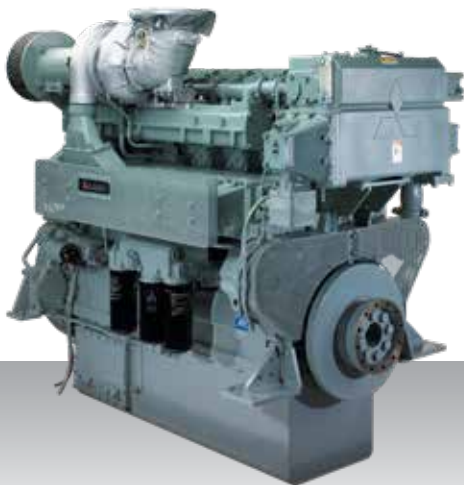


Propulsion - IMO Tier II
High speed - Propulsion package

S6R2-T2MPTK3



6-cylinder, 4-stroke, water-cooled diesel engine,
with direct-injection, turbocharger, air-cooler,
built-up heat exchanger and sea water pump.

Bore x stroke (mm) : 170 x 220
Displacement (l) : 29.96

Rating

kW	bhp	rpm	Rating	Emission
691	927	1406	HD	IMO Tier II
759	1018	1406	MD	IMO Tier II

Engine dimensions & dry weight

L (mm) : 2105
W (mm) : 1183
H (mm) : 1695
Dry weight (kg) : 3130

Dimensions and weight are based on standard configuration.