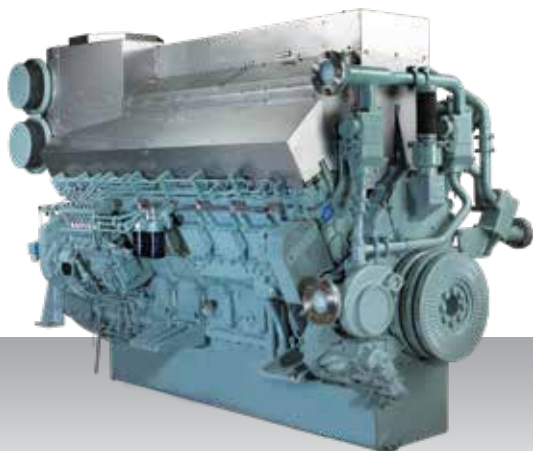


Propulsion - IMO Tier II
High speed - Engine

S16R2-T2MPTAW



16-cylinder, 4-stroke, water-cooled diesel engine,
with direct-injection, turbocharger and air-cooler.

Bore x stroke (mm) : 170 x 220

Displacement (l) : 79.90

Rating

kW	bhp	rpm	Rating	Emission
1450	1944	1350	UCD	IMO Tier II
1600	2146	1400	HD	IMO Tier II
1885	2528	1500	MD	IMO Tier II

Engine dimensions & dry weight

L (mm) : 2946

W (mm) : 1525

H (mm) : 2030

Dry weight (kg) : 7750

Dimensions and weight are based on standard configuration.