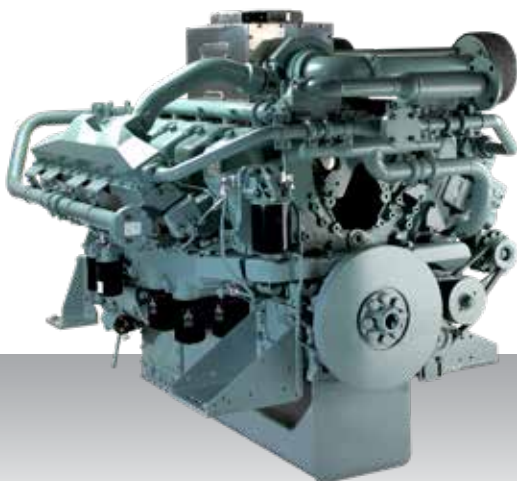


Propulsion - IMO Tier II  
High speed - Engine

# S12A2-MPTAW



12-cylinder, 4-stroke, water-cooled diesel engine, with direct-injection, turbocharger and air-cooler.

Bore x stroke (mm) : 150 x 160

Displacement (l) : 33.93

## Rating

| kW  | bhp  | rpm  | Rating | Emission    |
|-----|------|------|--------|-------------|
| 701 | 940  | 1940 | UCD    | IMO Tier II |
| 776 | 1041 | 2000 | HD     | IMO Tier II |

## Engine dimensions & dry weight

L (mm) : 2059

W (mm) : 1654

H (mm) : 1566

Dry weight (kg) : 3380

Dimensions and weight are based on standard configuration.