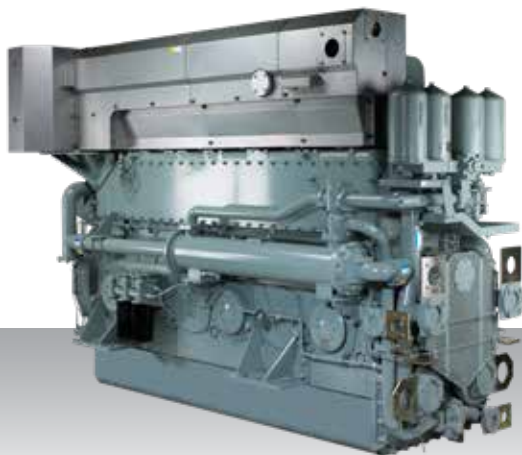


Auxiliary generator
IMO Tier II - Medium speed

S6U2-MPTK



6-cylinder, 4-stroke, water-cooled diesel engine,
with direct-injection, turbocharger and air-cooler.

Bore x stroke (mm) : 240 x 300

Displacement (l) : 81.43

Rating

kW	bhp	rpm	Hz	Emission
1250	1676	900	60	IMO Tier II
1363	1828	1000	50	IMO Tier II

Engine dimensions & dry weight

L (mm) : 3226

W (mm) : 1429

H (mm) : 2177

Dry weight (kg) : 8650

Dimensions and weight are based on standard configuration.