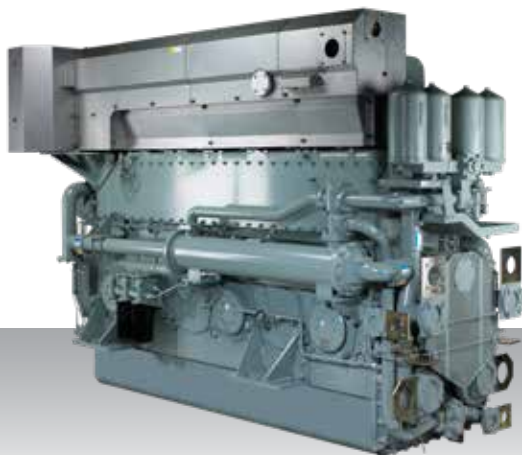


Auxiliary generator
IMO Tier II - Medium speed

S6U-MPTK



6-cylinder, 4-stroke, water-cooled diesel engine,
with direct-injection, turbocharger and air-cooler.

Bore x stroke (mm) : 240 x 260

Displacement (l) : 70.57

Rating

kW	bhp	rpm	Hz	Emission
1150	1542	900	60	IMO Tier II
1270	1703	1000	50	IMO Tier II
1343	1801	1200	60	IMO Tier II

Engine dimensions & dry weight

L (mm) : 3211

W (mm) : 1429

H (mm) : 2104

Dry weight (kg) : 8350

Dimensions and weight are based on standard configuration.