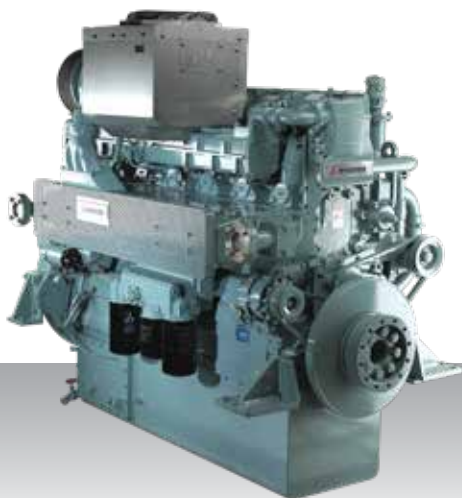


Auxiliary generator
IMO Tier II / IMO Tier III
High speed

S6R-MPTAW



6-cylinder, 4-stroke, water-cooled diesel engine,
with direct-injection, turbocharger and air-cooler.

Bore x stroke (mm) : 170 x 180

Displacement (l) : 24.51

Rating

kW	bhp	rpm	Hz	Emission	SCR system IMO Tier III*
545	731	1500	50	IMO Tier II / III	SCR25
635	852	1800	60	IMO Tier II / III	SCR25

*For more information on our SCR systems, please see chapter SCR system specifications or visit our website engine-genset.mhi.com

Engine dimensions & dry weight

L (mm) : 1786

W (mm) : 1220

H (mm) : 1650

Dry weight (kg) : 2830

Dimensions and weight are based on standard configuration.