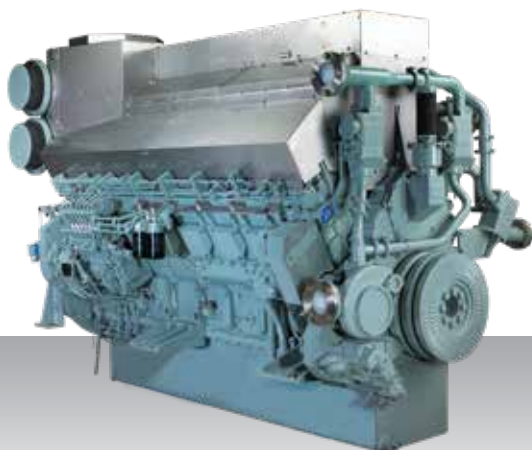


Auxiliary generator
IMO Tier II / IMO Tier III
High speed

S16R2-T2MPTAW



16-cylinder, 4-stroke, water-cooled diesel engine,
with direct-injection, turbocharger and air-cooler.

Bore x stroke (mm) : 170 x 220

Displacement (l) : 79.90

Rating

kW	bhp	rpm	Hz	Emission	SCR system IMO Tier III*
1568	2103	1200	60	IMO Tier II / III	SCR49
1960	2628	1500	50	IMO Tier II / III	SCR49

*For more information on our SCR systems, please see chapter SCR system specifications or visit our website engine-genset.mhi.com

Engine dimensions & dry weight

L (mm) : 2946

W (mm) : 1525

H (mm) : 2030

Dry weight (kg) : 7750

Dimensions and weight are based on standard configuration.