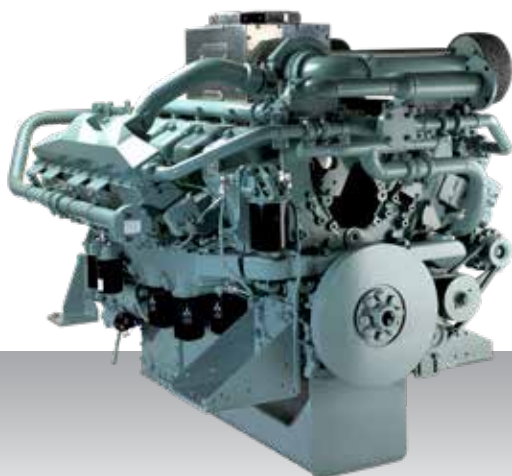


Auxiliary generator  
IMO Tier II / IMO Tier III  
High speed

# S12A2-MPTAW



12-cylinder, 4-stroke, water-cooled diesel engine,  
with direct-injection, turbocharger and air-cooler.

Bore x stroke (mm) : 150 x 160

Displacement (l) : 33.93

## Rating

kW	bhp	rpm	Hz	Emission	SCR system IMO Tier III*
709	951	1500	50	IMO Tier II / III	SCR25
828	1110	1800	60	IMO Tier II / III	SCR25

\*For more information on our SCR systems, please see chapter SCR system specifications or visit our website [engine-genset.mhi.com](http://engine-genset.mhi.com)

## Engine dimensions & dry weight

L (mm) : 2059

W (mm) : 1654

H (mm) : 1596

Dry weight (kg) : 3380

Dimensions and weight are based on standard configuration.