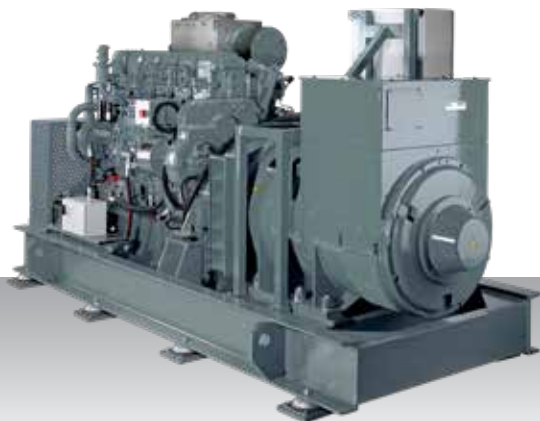


Generator set
IMO Tier II / III - High speed

MAS 760



Engine model S6R2-T2MPTK

Rating

	kVA	kWe	rpm	Hz	Emission	SCR system IMO Tier III*
Diesel-electric propulsion	765	612	1500	50	IMO Tier II / III	SCR25
Auxiliary generator	765	612	1500	50	IMO Tier II / III	SCR25

*For more information on our SCR systems, please see chapter SCR system specifications or visit our website engine-genset.mhi.com

Genset dimensions & dry weight

L (mm) : 3600
W (mm) : 1615
H (mm) : 1931
Dry weight (kg) : 6030

Dimensions and weight are based on standard configuration.