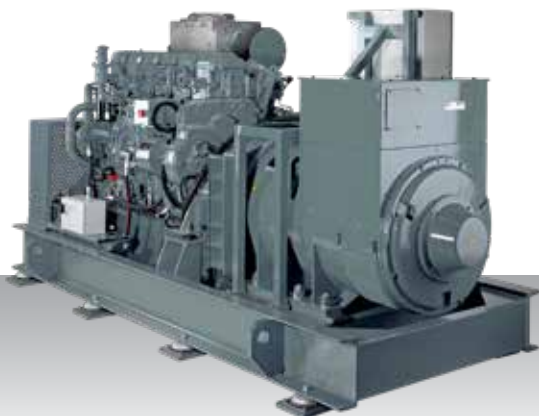


Generator set
IMO Tier II / III - High speed

MAS 650



Engine model S6R-MPTAW

Rating

	kVA	kWe	rpm	Hz	Emission	SCR system IMO Tier III*
Diesel-electric propulsion	652	522	1500	50	IMO Tier II / III	SCR25
	684	548	1800	60	IMO Tier II / III	SCR25
Auxiliary generator	652	522	1500	50	IMO Tier II / III	SCR25
	753	603	1800	60	IMO Tier II / III	SCR25

*For more information on our SCR systems, please see chapter SCR system specifications or visit our website engine-genset.mhi.com

Genset dimensions & dry weight

L (mm) : 3600

W (mm) : 1615

H (mm) : 1900

Dry weight (kg) : 5900

Dimensions and weight are based on standard configuration.