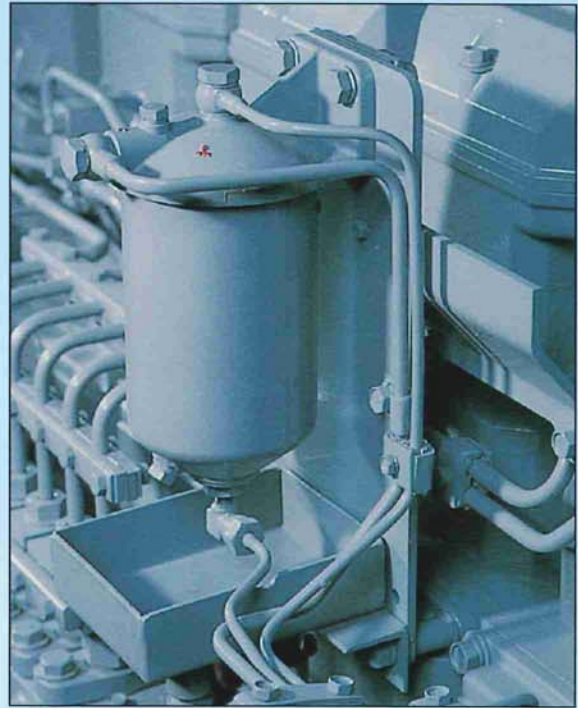
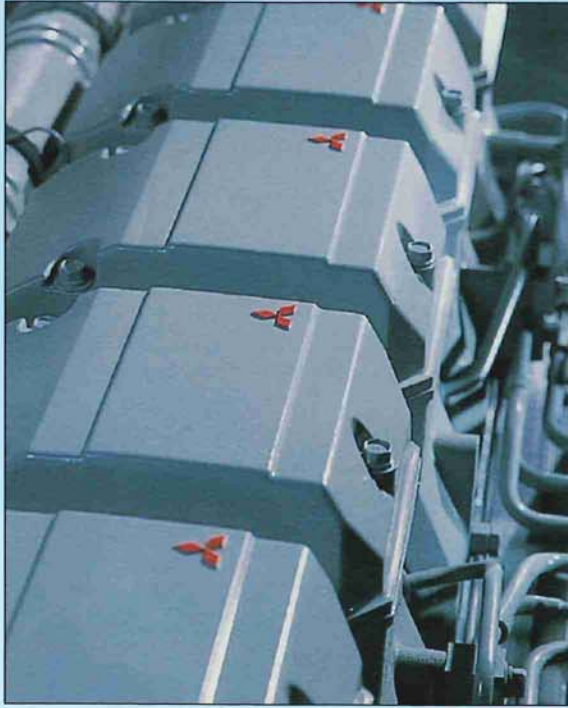
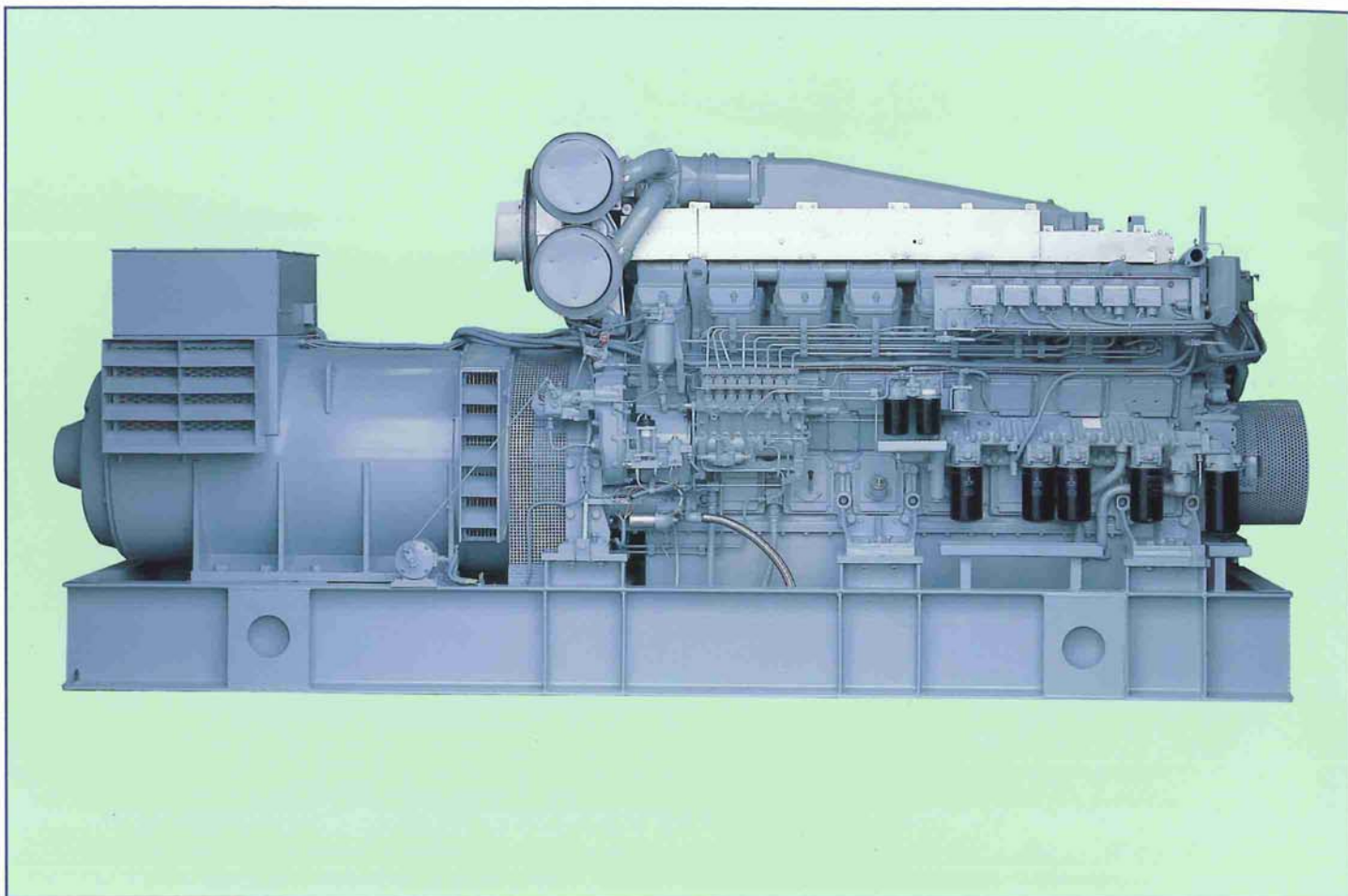


CUSTOM-BUILT QUALITY, DESIGNED BY MITSUBISHI

Mitsubishi Auxiliary Sets



MITSUBISHI
ENGINES



Type: M.A.S. 1560

Mitsubishi Auxiliary Sets

PROVEN PERFORMANCE OF MITSUBISHI AUXILIARY SETS

Mitsubishi Auxiliary Sets (M.A.S.); a combination of Mitsubishi diesel engines and European made alternators are generator sets precision manufactured under strict quality control in modern facilities.

Each M.A.S. is assembled by our skilled craftsmen and every unit is thoroughly load-tested according to Mitsubishi's standards. Reliable and durable performance is assured by Mitsubishi's superior technology

Reliable speed operation

Mitsubishi diesel engines have a generous design margin to drive alternators at 1200, 1500 or 1800 rpm. continuously. The frequency stability is assured by a hydraulic or electronic governor, in order to meet the international standards.

Minimum maintenance

Turbochargers, injection pumps and water-pumps have a fully integrated lubricating oil system with change-over lubricating oil filters. Individual cylinder heads, large side inspection covers and maintenance on one-side of the engine (SR in-line engines), provide an easy access to main parts. An international service network, in more than 20 countries, backs up the product.

Alternator

The AC alternator is self-exciting, self-regulating drip-proof and brushless. Radio interference suppression is in the line with the VDE, class N.

General Arrangement

The M.A.S. are designed to meet the requirements of the international classification societies. The sets can be supplied in a single bearing or 2-bearing configuration.

Low vibration and noise

The M.A.S. are mounted on a base frame with vibration absorbers which eliminate noise resonance, high-frequency vibrations and reduces the stress on the foundation.

Low fuel consumption and cleaner emission

The technicians of Mitsubishi are proud having succeeded in making a highly fuel efficient and economical combustion system. The result is that the total fuel consumption is reduced drastically.

MITSUBISHI engines meet the most demanding emission control regulations, contributing to an improvement of our planet.

A clean exhaust is conducive to people and the environment!

Therefore they are an ideal power source!



GEN. SET MODEL M.A.S.	ENGINE MODEL	CONTINUOUS GENERATOR OUTPUT IN KVA (ISO 3046 / DIN 6271)		
		1,200 1-Min.	1,500 1-Min.	1,800 1-Min.
220	S6B-MPT	163	226	252
265	S6B-MPTA	177	278	331
290	S6B-MPTK	225	304	358
370	S6B3-MPTA	283	390	450
390	S6B3-MPTK	320	422	492
450	S6A3-MPTA	374	478	552
455	S6R-MPT	374	453	522
500	S6A3-MPTK	380	513	570
525	S6R2-MPT	440	523	
580	S6R-MPTA	456	611	714
620	S6R-MPTK	504	644	762
675	S6R2-MPTA	576	711	
730	S6R2-MPTK	595	763	
765	S12A2-MPTA	654	813	913
775	S12N-MPT	643	775	890
800	S12A2-MPTK	662	849	994
885	S12N-MPTA	797	968	1128
1000	S12N-MPTK	904	1129	1164
1330	S12R-MPTA	912	1331	1428
1345	S12R-MPTK	1008	1355	1524
1560	S16R-MPTA	1224	1580	1908
1650	S16R-MPTK	1344	1710	2028

Remarks: KVA rating at 0.8 pf Voltage: 50Hz 380/415 V. • 60 Hz 460/480 V.

Performance based on:

Average load of continuous rating (100%) : 60 - 80%

Annual operating hours : 3000 - 4000

100% load available during 3 hours per 12 hours operating time.

All figures are subject to change without prior notice.



MITSUBISHI
ENGINES



• **M.E.E. Almere - the Netherlands. European subsidiary of Mitsubishi Heavy Industries, Ltd, Japan.**



DAMSLUISWEG 2 NL 1332 EC ALMERE
P.O. BOX 30101 NL 1303 AC ALMERE
TEL.: +31-36 5388311 FAX: +31-36 5388342